

WWW.listerblinds.co.uk | 01943 879510



BLINDS AUTOMATION.

AUTOMATION FOR ROLLER, VENETIAN, ROMAN, PLEATED BLINDS.

THE HOME OF AUTOMATION

SMART AUTOMATION

SMART LIVING.



BLINDS AUTOMATION WITH Lister Blinds.

Our range of motors and controls for internal and external window shading includes both battery and mains operated systems, bi-directional wireless controls and smart home automation.

All devices are covered by a comprehensive 5 year warranty.

METAL VENETIAN

WOOD VENETIAN

DOMESTIC ROLLER BLINDS

COMMERCIAL ROLLER BLINDS

PLEATED BLINDS

ROMAN BLINDS

SCREENS

VERTICAL

CURTAINS

Motor Type Key:

B = Battery Powered

EB = External Battery

M = Mechanical

E = Electronic Limits



32 SERIES-B

BiDi

Designed for 32mm tube, a battery operated tubular motor with adapters to fit industry standard 32mm roller tube. Soft, quiet and complete wireless control of roller blinds. Adaptors included on the motor at no extra charge. **Bidirectional only.**



CHARGER CABLE
BMCH.0005

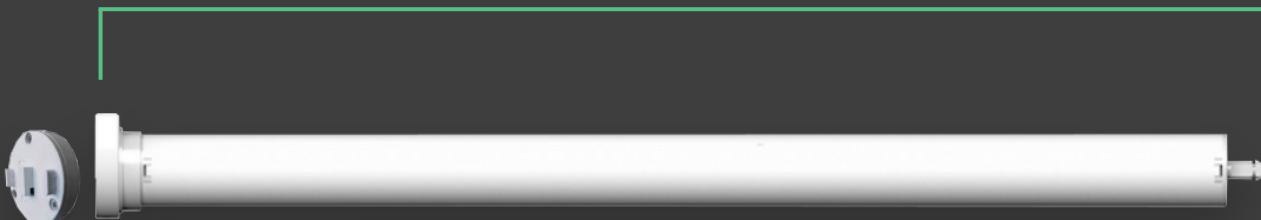


SOLAR PANEL
BMHH.0003

- Three step easy programming
- Soft closure at end limit stops preventing damage to fabric
- Bi-directional wireless controls
- Powerful 0.5Nm motor torque
- Endless electronic limits
- Rechargeable lithium battery.
- Optional Solar Panel - BMHH.0003
- Up to 300 complete open & close cycles per charge lasting approx. 6/8 months before recharging
- Supplied with 32mm adaptors
- Motor length only 496mm
- Home Hub Compatible
- Ergonomic hand and wall mounted controls

CODE	VOLTAGE	TORQUE	SPEED	POWER	CURRENT	DIAMETER
BM20.0001	8.4Vdc	0.5Nm	28RPM	10 WATTS	1.3 AMPS	20mm

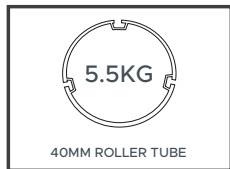
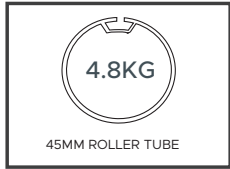
TOTAL LENGTH 496MM



40 SERIES-EB

BiDi

Battery operated tubular motor with adapters to fit industry standard 40 and 45mm roller tube. Soft, quiet and complete wireless control of roller blinds. With this motor you will need a large external battery pack (code: BMEB.9800) and charger (code: BMCH.0001). **Bidirectional only.**



REQUIRED FOR MOTOR

40mm Adaptor **BMCH.2540**

40mm Motor Plate **BMAC.2501**

External Battery **BMEB.9800**



SOLAR PANEL
BMSP.1298H



CHARGER CABLE
BMCH.0001



ADAPTOR
BMCH.2540



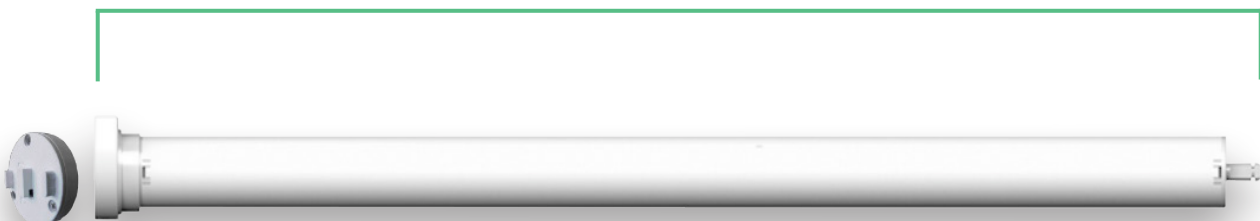
ADAPTOR
BMCH.2545

- Three step easy programming
- Soft close and end limit stops preventing damage to fabric
- Bi directional wireless controls
- Powerful 1.1Nm motor torque
- Speed variations
- Endless electronic limits
- Optional Solar Panel - **BMHH.0003**

- Optional 45mm Adaptor - **BMAC.2545**
- Up to 300 complete open & close cycles per charge lasting approx. 6/8 months before recharging
- Supplied with 40mm adaptors
- Motor length only 350mm
- Home Hub Compatible
- Ergonomic hand and wall mounted controls

CODE	VOLTAGE	TORQUE	SPEED	POWER	CURRENT	DIAMETER
BM25.2040	12V	1.1Nm	28RPM	12 WATTS	1 AMPS	25mm

TOTAL LENGTH 350MM



40 SERIES-B

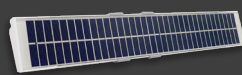
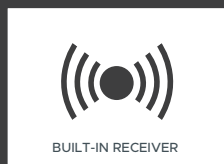
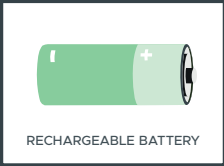
BiDi

A powerful battery operated tubular motor with adapters to fit industry standard 40mm and 45mm roller tubes. Soft, quiet, powerful and complete wireless control of roller blinds. **Bidirectional only.**

REQUIRED FOR MOTOR

40mm Adaptor **BMAC.2540**

40mm Motor Plate **BMAC.2501**



SOLAR PANEL
BMHH.0003



CHARGER CABLE
BMCH.0005



ADAPTOR
BMCH.2540

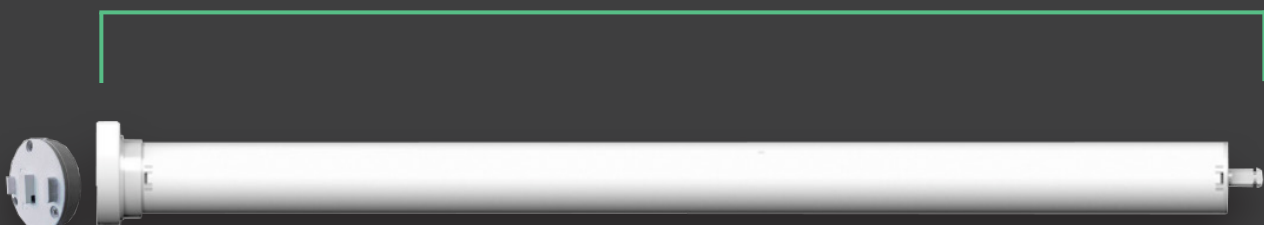


ADAPTOR
BMCH.2545

- Three step easy programming
- Soft closure at end limit stops preventing damage to fabric
- Bi-directional wireless controls
- Powerful 1.1Nm motor torque
- Smooth fast 40rpm motor speed
- Three speed variations
- Endless electronic limits
- Optional Solar Panel - BMHH.0003
- Optional 45mm Adaptor - BMAC.2545
- Rechargeable lithium battery.
- Up to 300 complete open & close cycles per charge lasting approx. 6/8 months before recharging
- Supplied with 40 mm adaptors
- Motor length only 550mm
- Home Hub Compatible
- Ergonomic hand and wall mounted controls

CODE	VOLTAGE	TORQUE	SPEED	POWER	CURRENT	DIAMETER
BM25.3010	12V	1.1Nm	40RPM	12WATTS	1 AMPS	25mm

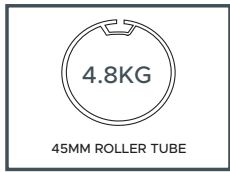
TOTAL LENGTH 550MM



40 SERIES-M

BiDi

A powerful hardwired 25mm diameter tubular motor with adapters to fit industry standard 40mm and 45mm roller tubes. Very powerful motor with built in wireless control. **Bidirectional only.**



REQUIRED FOR MOTOR

40mm Adaptor [BMAC.2540](#)

40mm Motor Plate [BMAC.2501](#)



ADAPTOR
[BMCH.2540](#)

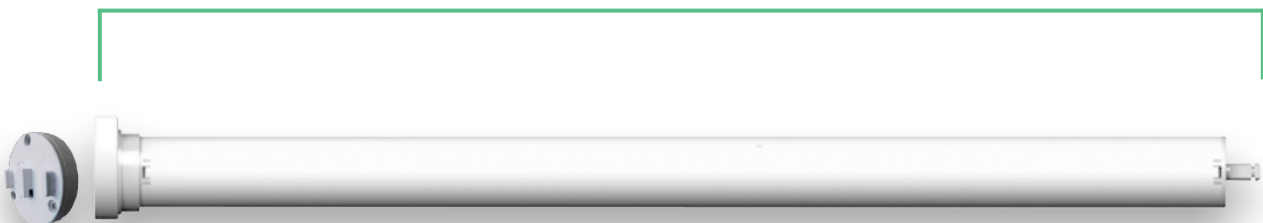


ADAPTOR
[BMCH.2545](#)

- Mains voltage 240v
- Bidirectional
- Wireless radio control
- Powerful 1.5Nm motor torque
- Fast 32rpm operating speed
- Endless electric grids
- Three speed settings
- Motor length 470mm
- Adaptors for 40/45mm roller tube

CODE	VOLTAGE	TORQUE	SPEED	POWER	CURRENT	DIAMETER
BM25.4020	240V	1.5Nm	32RPM	10WATTS	1 AMPS	25mm

TOTAL LENGTH 470MM



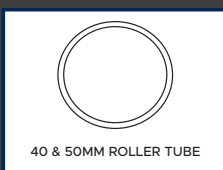
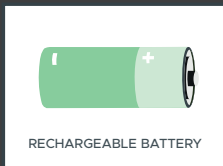
50 SERIES-B

BiDi

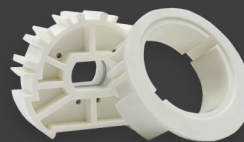
50 Series-B motor range 35mm diameter with built in battery and wireless control for roller tubes from 40mm round. **Bidirectional only.**

REQUIRED FOR MOTOR

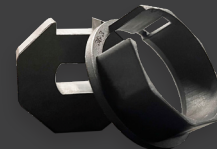
Charger BMCH.0008



CHARGER CABLE
BMCH.0005



ADAPTOR
BMAC.2540



ADAPTOR
EMS-40



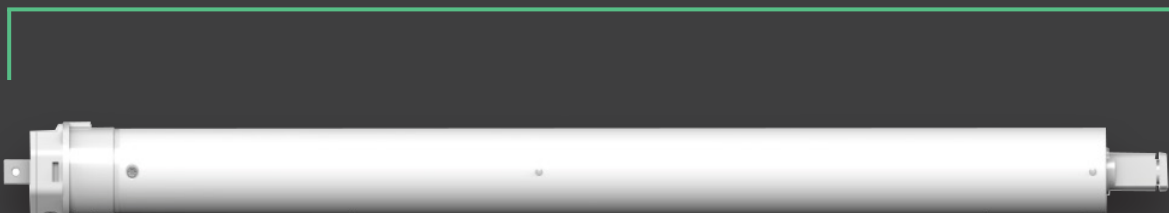
ADAPTOR
EMS-36

- Bidirectional wireless control
- Fast 28rpm motor speed
- Powerful 6Nm motor torque
- Built in Lithium battery
- Motor Length 690mm
- Adaptors for 40/50 round (not slotted) & Louvolite 55mm Honeycomb and others

- Optional L/L 55mm Tube - EMS40-0
- Optional Smooth 40mm Tube - EMS36
- Optional Smooth 50mm Tube - EMS50
- Optional YewPale 53mm - BMAC.3553

CODE	VOLTAGE	TORQUE	SPEED	POWER	CURRENT	DIAMETER
BM35.3030	12Vdc	6Nm	28RPM	155WATTS	0.67AMPS	35mm

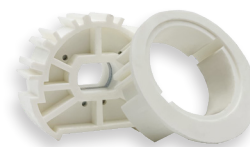
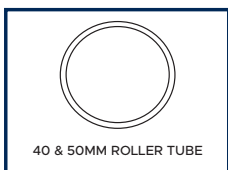
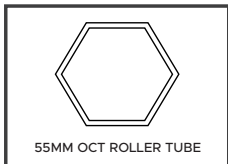
TOTAL LENGTH 690MM



50 SERIES-M

UNI

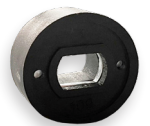
Hardwired Mechanical, 35mm Mains Operated Tubular Motors with built in wireless receiver and mechanical limits. *Unidirectional only.*



ADAPTOR
BMAC.2540



ADAPTOR
EMS-40



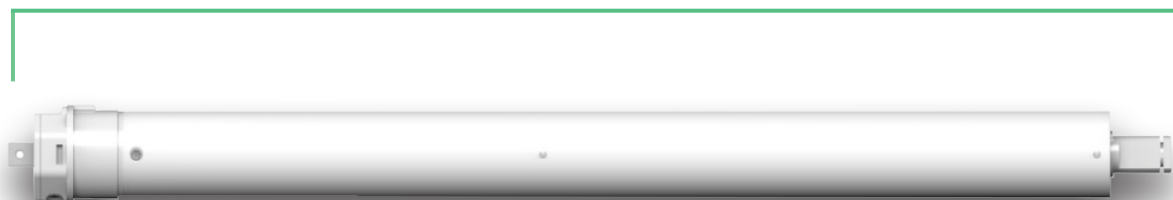
ADAPTOR
EMS-36

- Mains voltage 240v
- Fast 28rpm motor speed
- Powerful 3Nm motor torque
- Adaptors for 40/50 round (not slotted) & Louvolite 55mm Honeycomb and others
- Motor Length 470mm
- Mechanical limits

- Ideal for AV home systems
- Optional L/L 55mm Tube - EMS40-0
- Optional Smooth 40mm Tube - EMS36
- Optional Smooth 50mm Tube - EMS50
- Optional YewPale 53mm - BMAC.3553

CODE	VOLTAGE	TORQUE	SPEED	POWER	CURRENT	DIAMETER
BM35.3001	240V	3Nm	28RPM	155WATTS	0.67AMPS	35mm

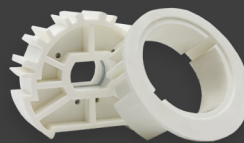
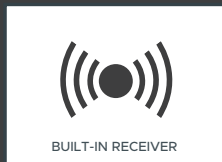
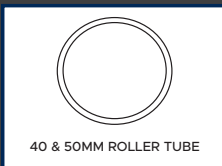
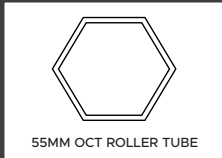
TOTAL LENGTH 470MM



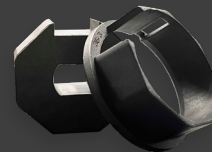
50 SERIES-E

BiDi

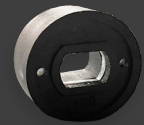
35mm diameter tubular motor with electronic limits and built in radio receiver.
 Bidirectional only.



ADAPTOR
 BMAC.2540



ADAPTOR
 EMS-40



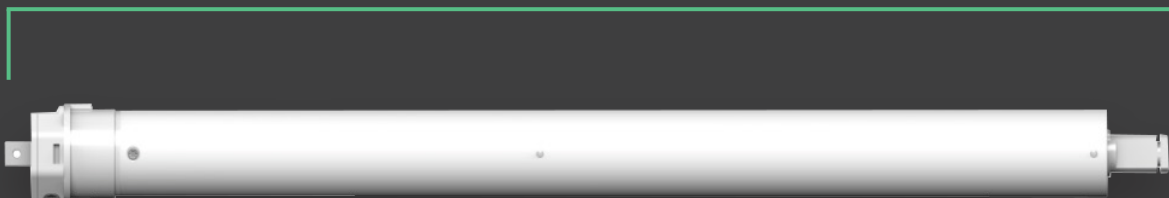
ADAPTOR
 EMS-36

- Mains voltage 240v
- Wireless radio control
- Powerful 6Nm motor torque
- Fast 28rpm operating speed
- Three speed settings
- Motor length 580mm

- Adaptors for 40/50 round (not slotted) & Louvolite 55mm Honeycomb and others
- Optional L/L 55mm Tube - EMS40-0
- Optional Smooth 40mm Tube - EMS36
- Optional Smooth 50mm Tube - EMS50
- Optional YewPale 53mm - BMAC.3553

CODE	VOLTAGE	TORQUE	SPEED	POWER	CURRENT	DIAMETER
BM35.3040	240V	6Nm	28RPM	0.98WATTS	0.43AMPS	35mm

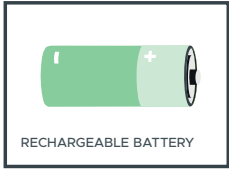
TOTAL LENGTH 580MM



24 SERIES

BiDi

Available in single shaft (BM24.1035) and double shaft (BM24.2035). **Bidirectional only.**



INTERNAL BATTERY BMBP.0001



- 24mm Diameter Motor
- Endless electronic limits
- Built in receiver
- Double and Single shaft options
- Adaptors supplied
- External battery required
- Roman Adaptor BMAC.7001
- Square Roman Adaptor BMAC.8001
- Charger BMCH.0001
- Solar Panel BMSP.1289H

EXTERNAL BATTERY BMEB.9800



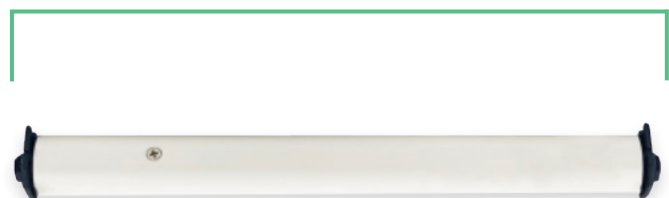
CODE	VOLTAGE	TORQUE	SPEED	POWER	CURRENT	DIAMETER
BM24.1035	12V	0.6Nm	34RPM	10WATTS	0.83AMPS	24mm
BM24.2035		0.8Nm	45RPM			

TOTAL LENGTH 135MM



BM24.1035

TOTAL LENGTH 195MM



BM24.2035

SIMPLY ELEVATE
YOUR HOME.



CONTROL FROM
YOUR DEVICE.

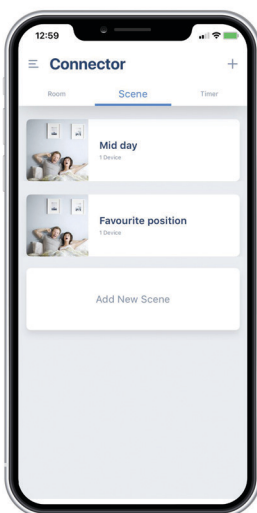


CONTROL YOUR HOME FROM ANY DEVICE, ANY TIME, ANYWHERE...

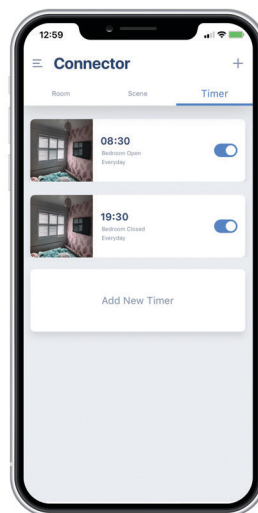


Get Connected with our Smart Home Automation Hub.

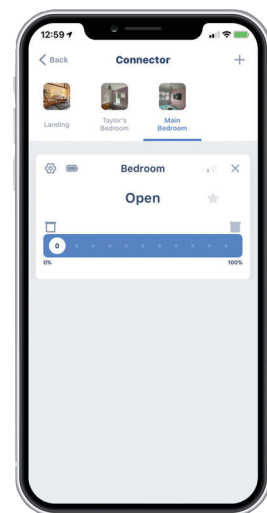
- App based through Shade Connector +
- 2.4MHz frequency
- Easy Setup with tutorial on the app---
- Operate your blinds from anywhere in the world
- Manage up to 30 Blinds
- Timers
- Set Scenes with bi directional motors
- Battery strength indicator for each motor using bi directional motors
- Operate your blinds in increments with bi directional motors
- Compatible with Amazon Alexa, Google Assistant, Siri and IFFFT
- Connect wireless to Control4 or ask for Driver



PROGRAMME YOUR DESIRED SETTINGS.



SET TIMES FOR AUTOMATIC OPEN AND CLOSE.



FULL CONTROL FROM YOUR DEVICE.

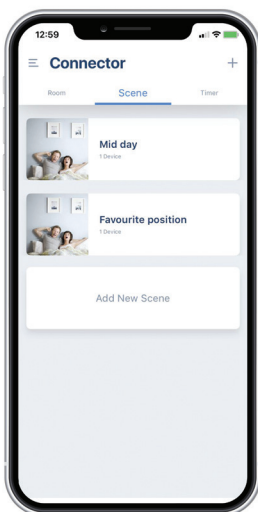


REMOTE CONTROL FROM A MORE COMPACT HUB.

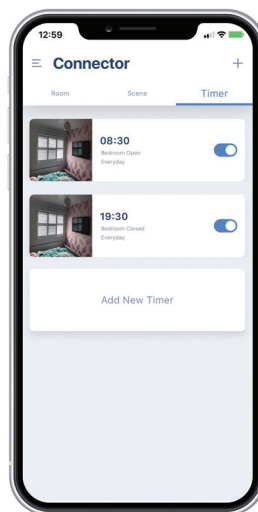
The Mini Hub is a smaller version of its Luxury Hub equivalent, by connecting them to your Wi-Fi network the Hub allows you to operate your blinds via smartphone with the free Connector app or voice control devices.



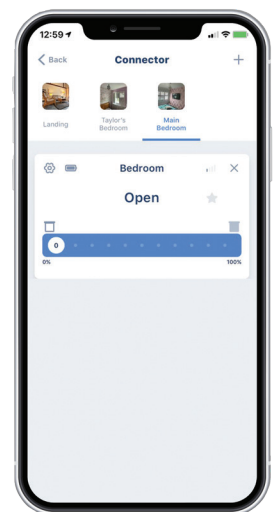
- Designed for smaller properties.
- App based through Shade Connector + 2.4MHz frequency
- Easy Setup with tutorial on the app
- Operate your blinds from anywhere in the world
- Manage up to 30 Blinds
- Timers
- Set Scenes
- Battery strength indicator for each motor using bi directional motors
- Operate your blinds in increments with bi directional motors
- Compatible with Amazon Alexa, Google Assistant, siri and IFFFT
- Connect wireless to Control4 or ask for Driver



PROGRAMME YOUR DESIRED SETTINGS.



SET TIMES FOR AUTOMATIC OPEN AND CLOSE.



FULL CONTROL FROM YOUR DEVICE.

INNOVATION FOR A
SMARTER FUTURE.



SIMPLE
AUTOMATION.



BIDIRECTIONAL TRANSMITTERS



WALL TRANSMITTER

BiDi

BMTR.9060

- 15 channel white colour finish
- Magnetic wall bracket, Uses 3 x CO2032 batteries
- Digital Display



1 CHANNEL TRANSMITTERS

BiDi

BASIC: BMTR.9050

PREMIUM: BMTR.9070

- Operate up to 20 blinds as a group
- Premium version with metal casing



15 CHANNEL TRANSMITTERS

BiDi

BASIC: BMTR.9055

PREMIUM: BMTR.9075

- Operate up to 20 blinds as a group
- Digital display
- Premium version with metal casing



LUXURY,
FOR ALL SETTINGS.



Lister Blinds & Shutters
60 Otley Road
Guiselley, Leeds
LS20 8AH
Tel: 01943 879510